

HUSSEY GAY BELL

— Established 1958 —



PARSONS

***Thank you for joining our community meeting
designed to provide information regarding the
Savannah-Chatham County
Public School System's ESPLOST II
Design and Construction Program for Juliette
Low Elementary Replacement School.***

March 30, 2016

Agenda

- INTRODUCTIONS
- PROJECT SCOPE
- PLANS & ELEVATIONS
- CONSTRUCTION DISCUSSION
- QUESTIONS

Juliette Low Elementary Replacement School

Design and construction of new 950 student school; demolition of existing school. Core spaces designed for to accommodate future growth

Students are in modular classrooms during construction

Budget: \$25,761,500

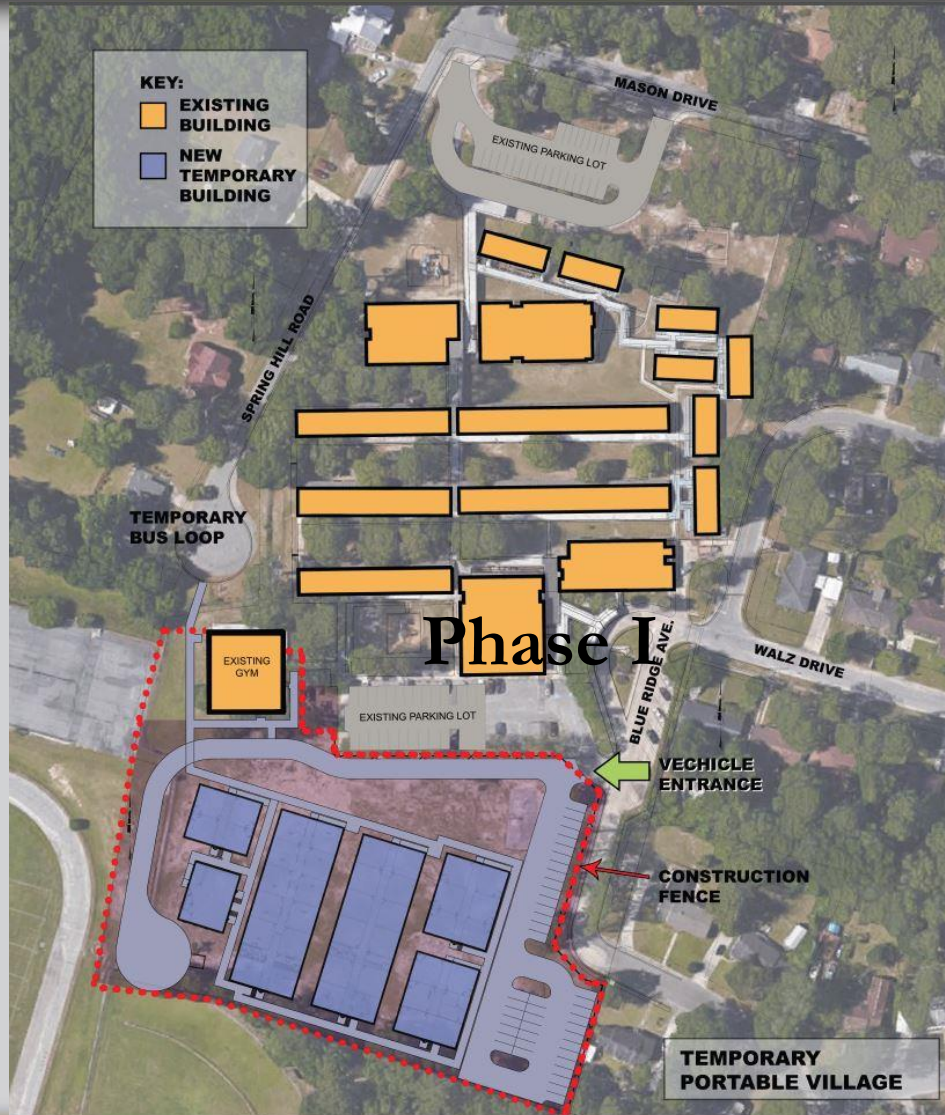
Schedule: Start Construction: April 2016
Occupancy of new school: August 2017

Team: Architect - Hussey Gay Bell
CMR – JE Dunn

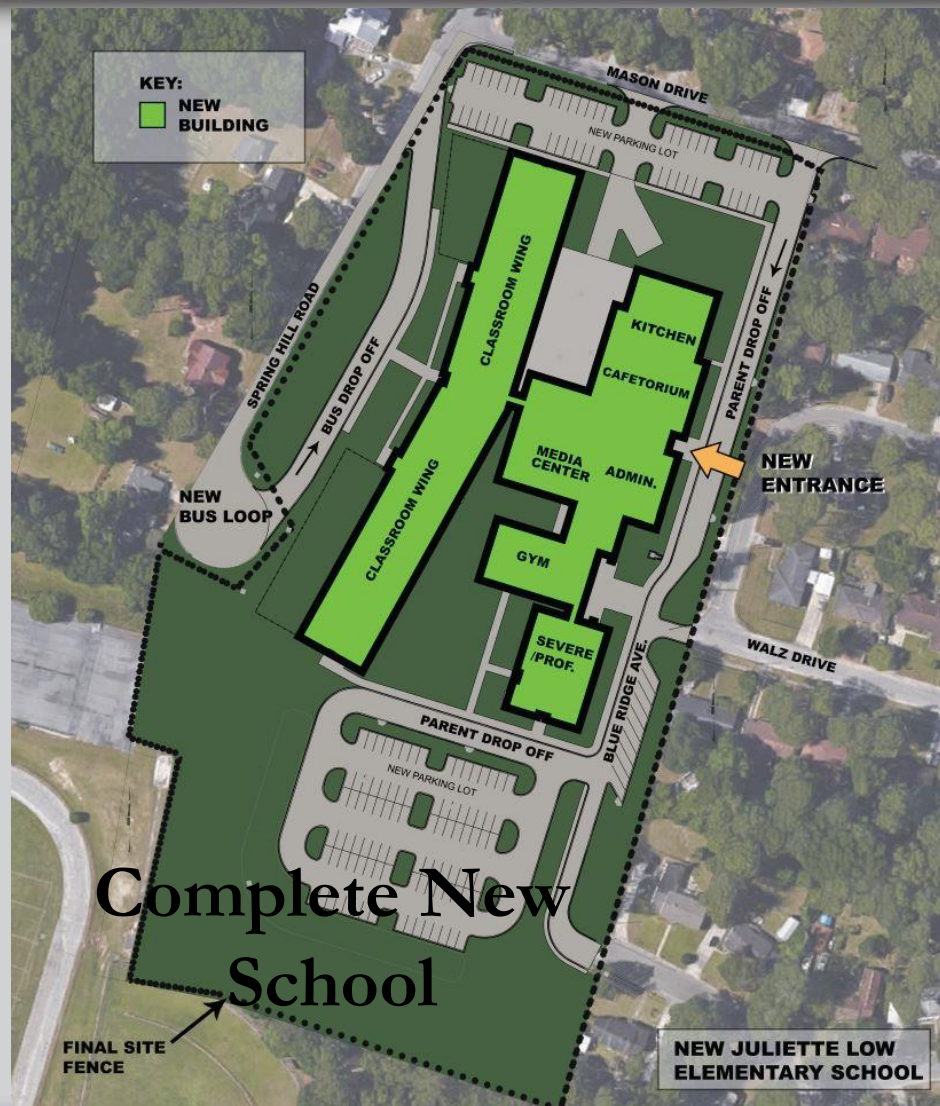
Existing Site



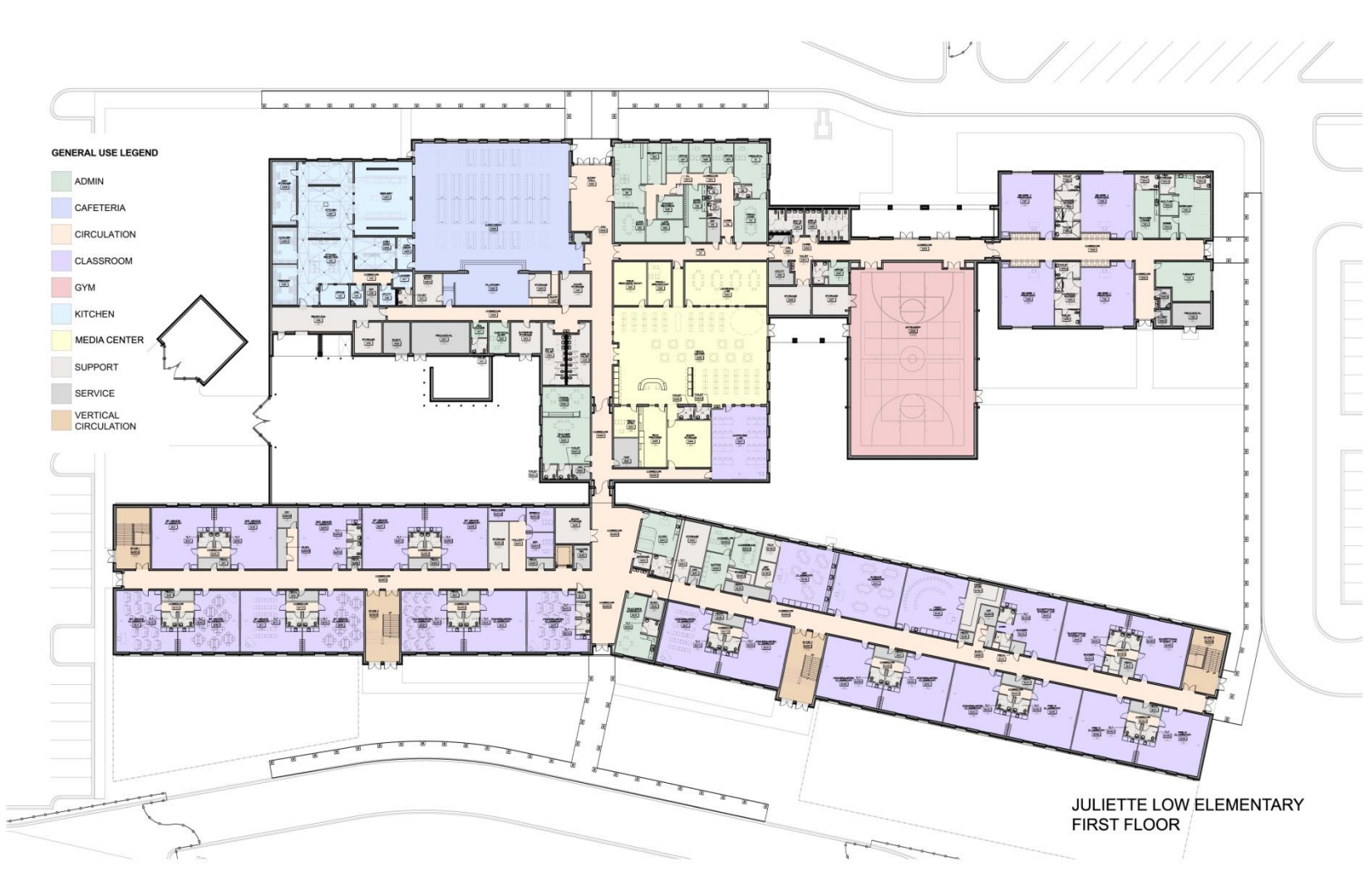
Phase I



Complete New School



First Floor Plan



Second Floor Plan

GENERAL USE LEGEND

- ADMIN
- CAFETERIA
- CIRCULATION
- CLASSROOM
- GYM
- KITCHEN
- MEDIA CENTER
- SUPPORT
- SERVICE
- VERTICAL CIRCULATION

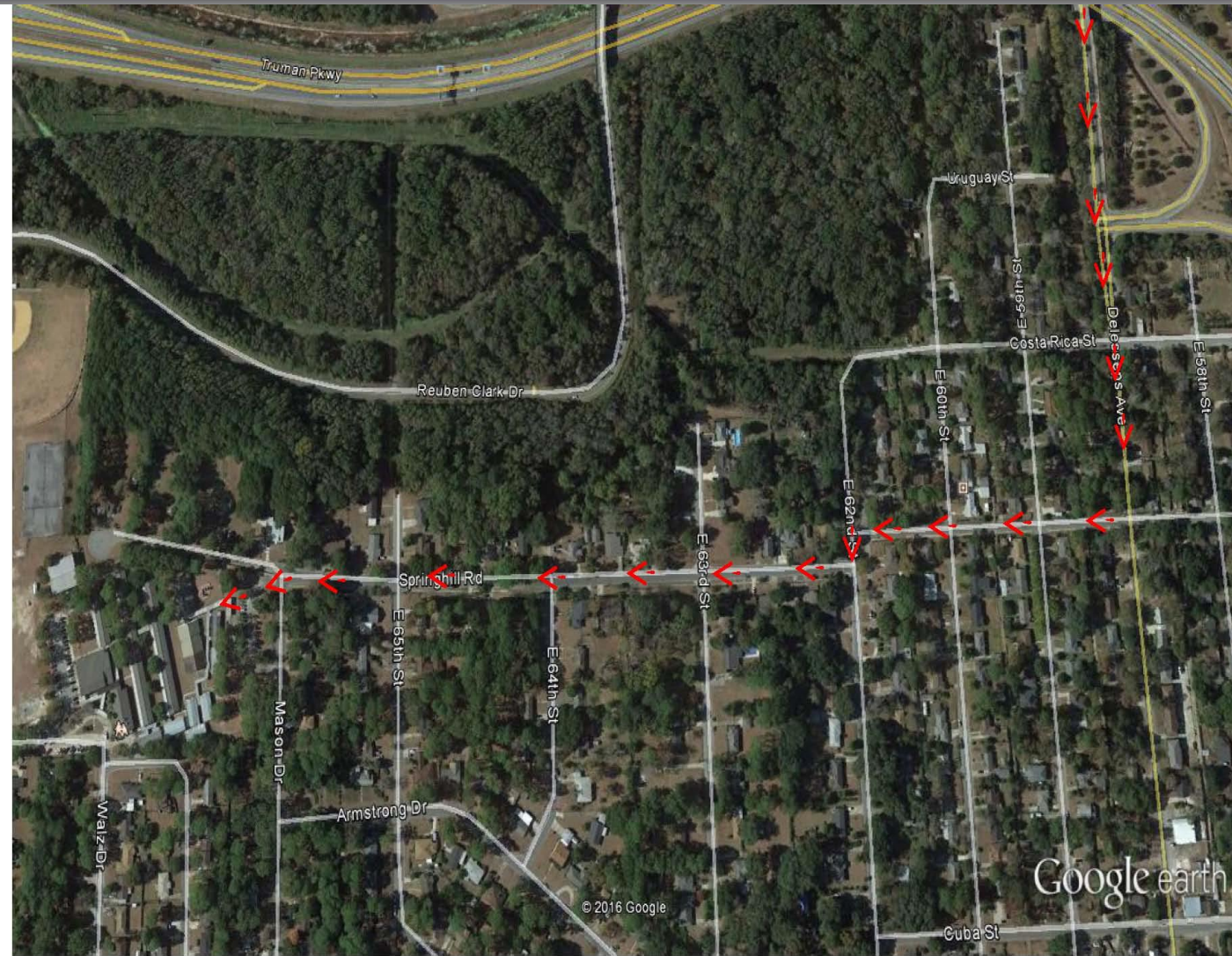


JULIETTE LOW ELEMENTARY
SECOND FLOOR

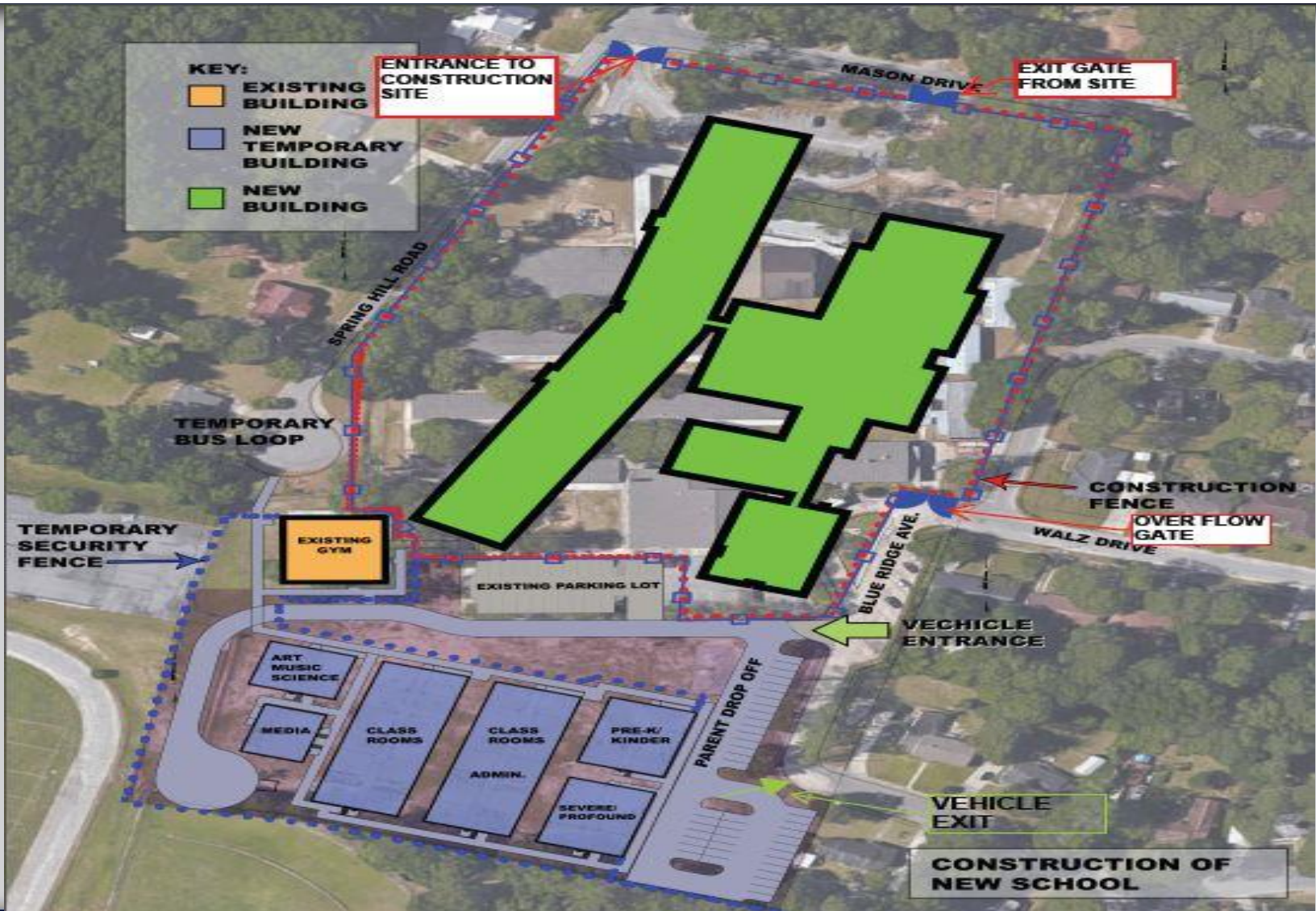




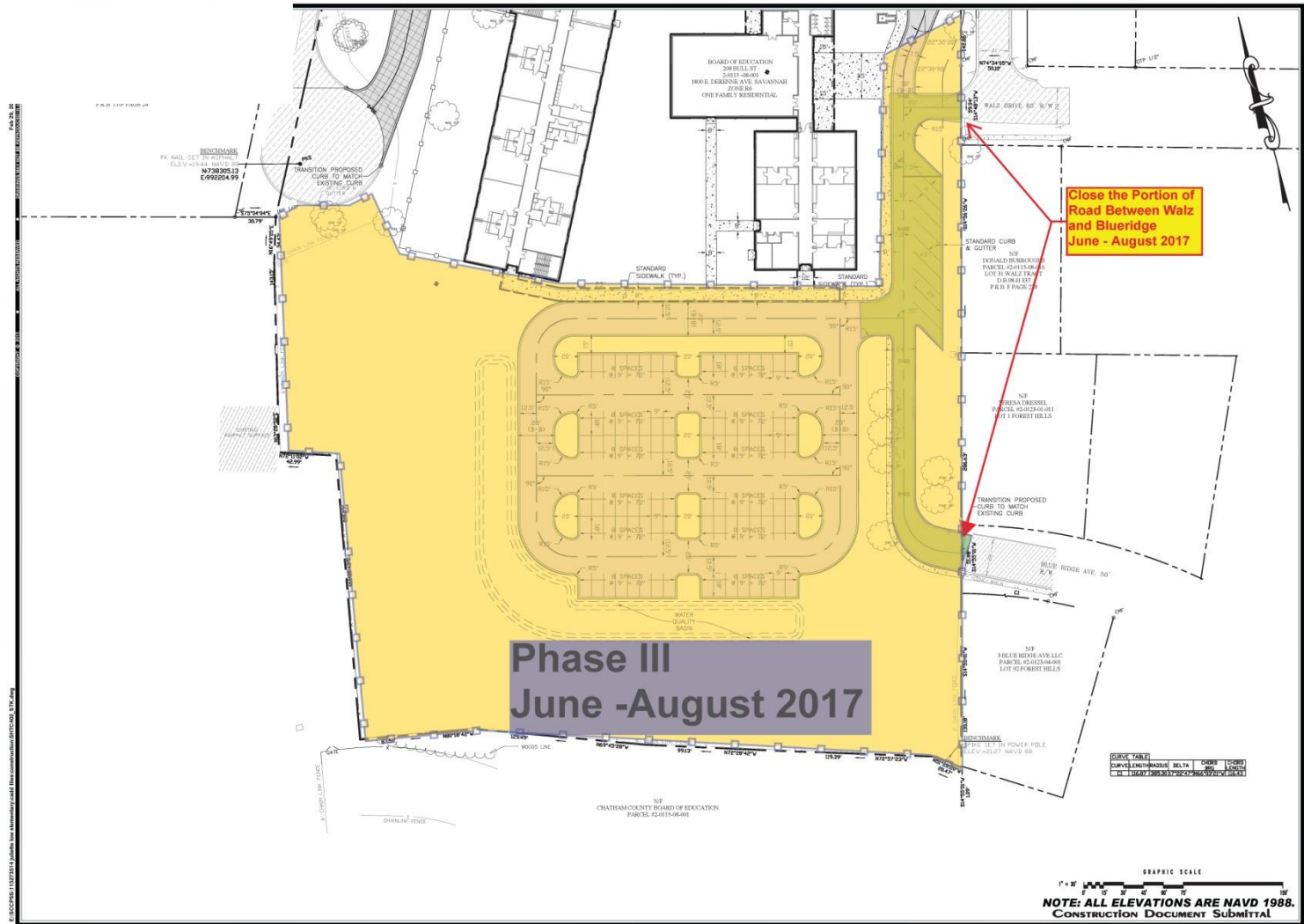
Construction Traffic Route



Phase II: April 2016 – June 2017



PHASE III: June 2017 – August 2017



Close the Portion of Road Between Walz and Blueridge June - August 2017

Phase III
June -August 2017

NOTE: ALL ELEVATIONS ARE NAVD 1988.
CONSTRUCTION DOCUMENT SUBMITTAL

HUSSEY GAY BELL
Established 1958
320 Commercial Drive, Savannah, GA 31406 | 912.354.4626

DATE: FEBRUARY 14, 2014
JOB NO: 115273514
SHEET: 1*307

PROJECT: JULIETTE LOW ELEMENTARY SCHOOL
SAVANNAH CHATHAM COUNTY PUBLIC SCHOOL SYSTEM
SAVANNAH, GEORGIA 31401
STAKING & TRAFFIC CONTROL PLAN

GRAPHIC SCALE
1" = 30'

C402
OF 11

Important Issues

- Safety of Students, Staff and Public
- Security
- Hours of Construction – Notification will be given before any off hour activity
- Noise and Dust Control

Questions

??????